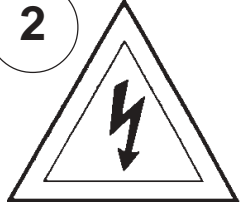


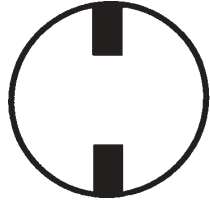
**Instructions for electrician**  
**STEPS 2 - 18**

**WARNING:**

**2**

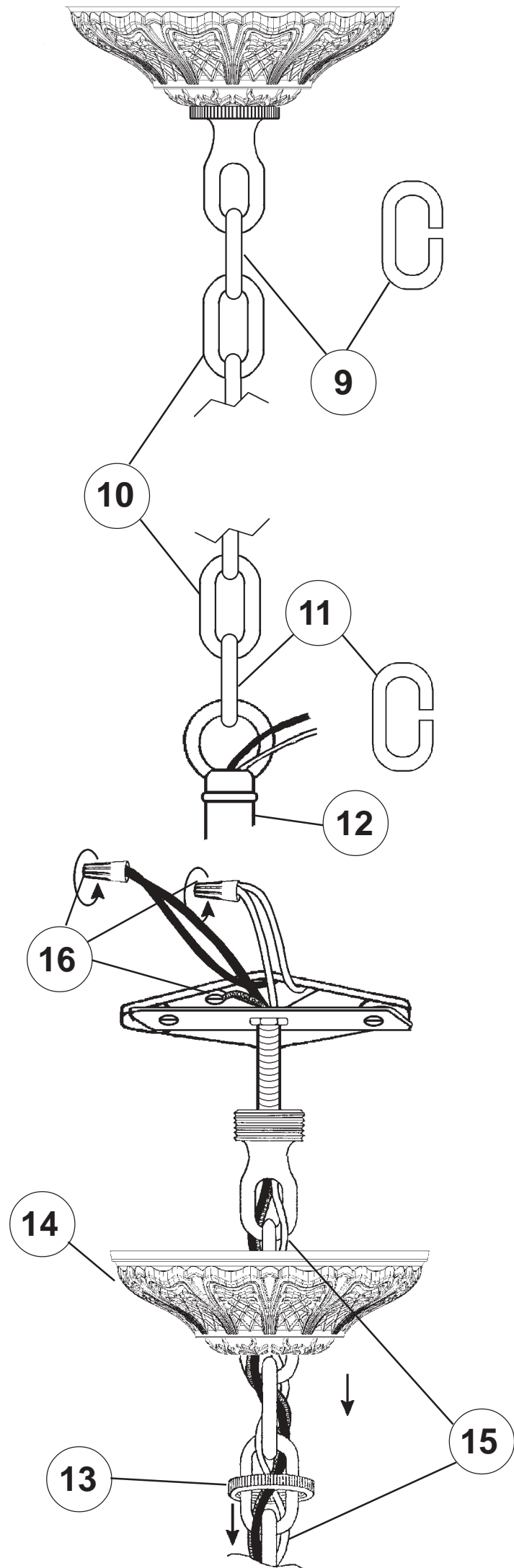
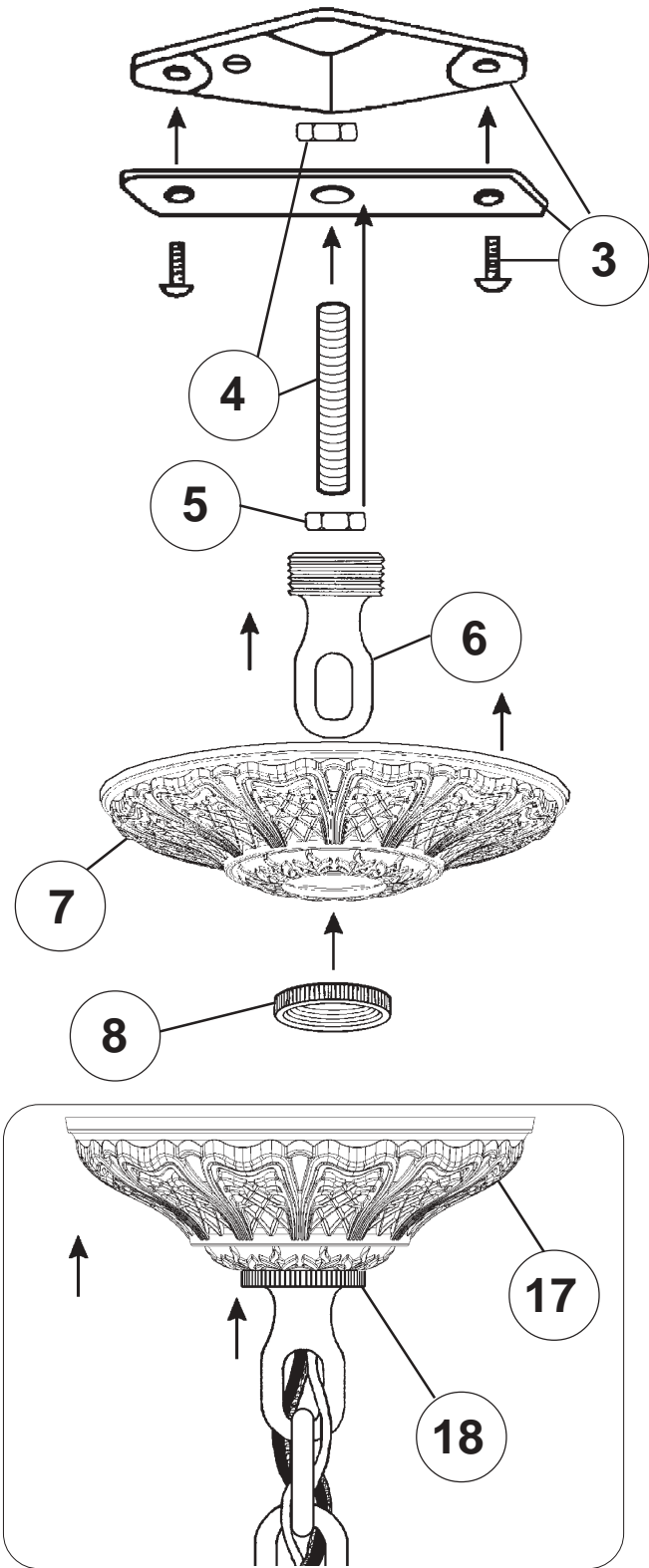


**Electrical Danger**



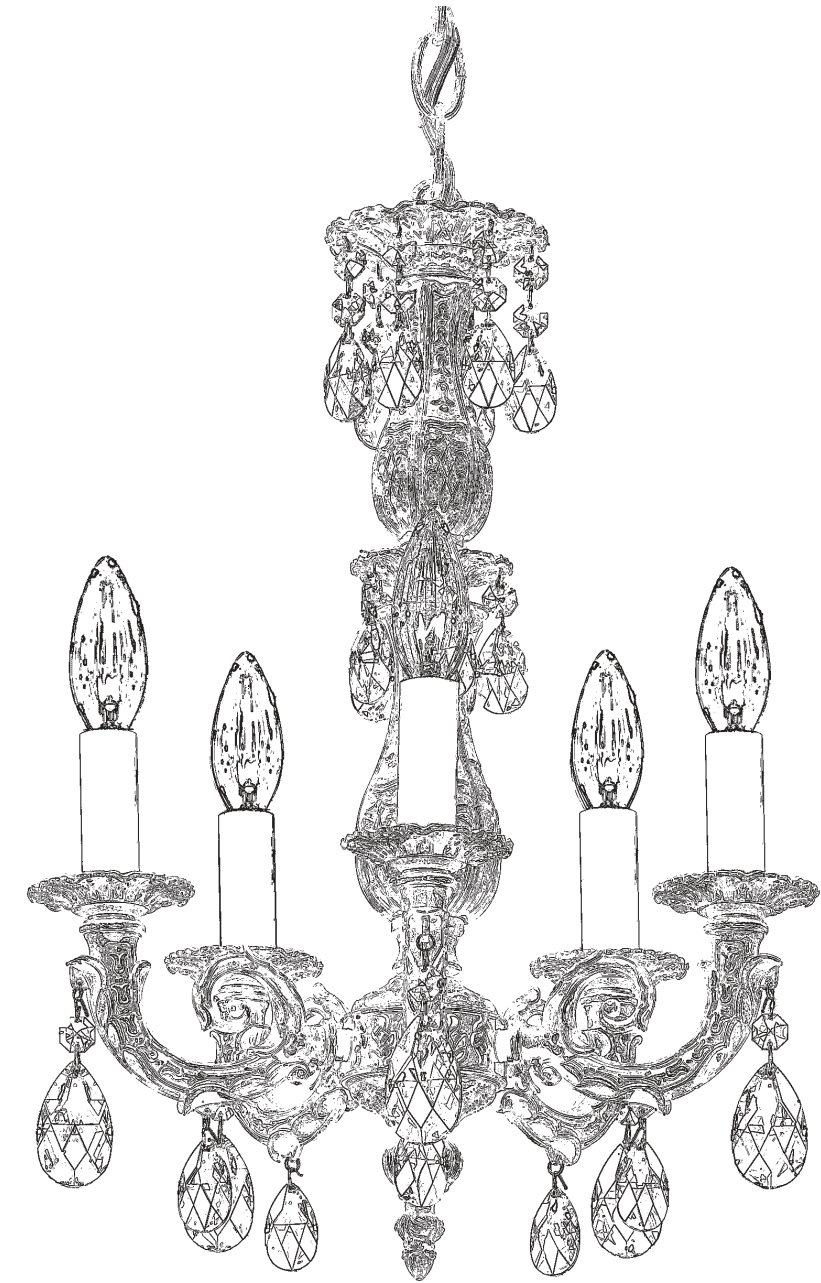
**Turn Power Off**

All electrical components must be installed by a licensed electrician in accordance with the National Electric Code and the appropriate local electrical codes.



**CHANDELIER 5665- \_\_\_\_\_ A TRIM DIAGRAM**

(Finish Option)



5 Lights  
Diameter: 13"  
Body Length: 19"  
Hanging Weight: 5 lbs.

**T**HIS DESIGN IS THE PROPRIETARY TRADE DRESS/TRADEMARK OF SCHONBEK WORLDWIDE LIGHTING INC.

**SCHONBEK®**

**See diagram on back page**  
**Follow steps in exact order**  
**Save this trim diagram for future reference**

**1**

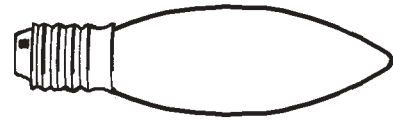
**IMPORTANT**  
*Person who opens carton should record the following information for future service.*

CODE # \_\_\_\_\_ Four-digit number on outside of carton.  
PACKER # \_\_\_\_\_ See crystal package label.  
ORDER # \_\_\_\_\_ See crystal package label.



# Instructions for crystal trimming

## STEPS 19 - 23

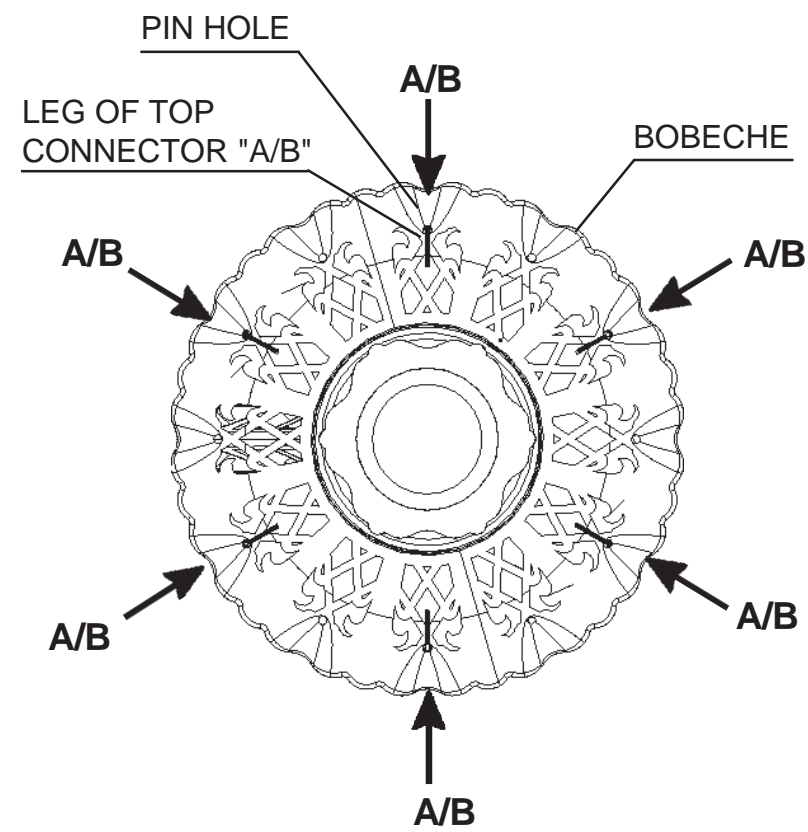


You will need 5 - C10  
25 Watts Recommended  
60 Watts Max

19

Install bulbs and be  
sure to test fixture  
BEFORE trimming.

### DIAGRAM #1



When trimming bobèche with letter "A/B", insert leg of top connector into pin hole from under bobèche. Hang in every other pin hole. Start with any pin hole. (refer to Diagram #1)

