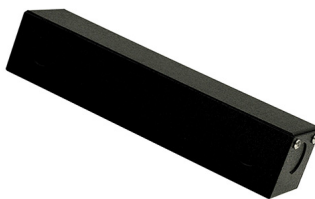


**monorail remote electronic transformer
150w 120v/12v led**

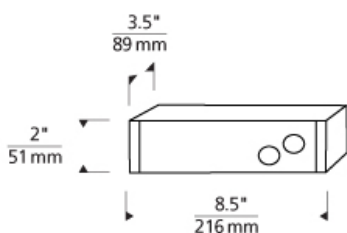
DESCRIPTION

Remote transformer encased in black metal housing complete with mounting feet and conduit knockouts. This remote electronic transformer can be used to power lamps totalling up to 150w and is equipped that will safely turn off the system should a short occur. Once the short is removed, the unit can be reset by simply flipping the wall switch off and back on. Dimmable with a 600w low-voltage electronic dimmer.



WEIGHT

2lb / 0.91kg ±



monorail remote
electronic
transformer 150w
120v/12v led

ORDERING INFORMATION

model

TRANS-RMTE-152

As a general rule when using LED fixtures we do not recommend using greater than 70% of specified maximum wattage on the transformer due to inrush current. for assistance, please contact our technical support department.

FIXTURE TYPE:	_____
JOB NAME:	_____
NOTES:	_____



7400 Linder Avenue
Skokie, Illinois 60077

T 847.626.6300
F 847.626.6350

www.lblighting.com



©2015 LBL Lighting. All Rights Reserved. The "LBL Lighting" graphic is a registered trademark of LBL Lighting. LBL Lighting reserves the right to change specifications for product improvements without notification.